



Greenhouse gas emissions from ruminant production – mitigation strategies

NØK congress 2008

Harald Volden^{1,2}

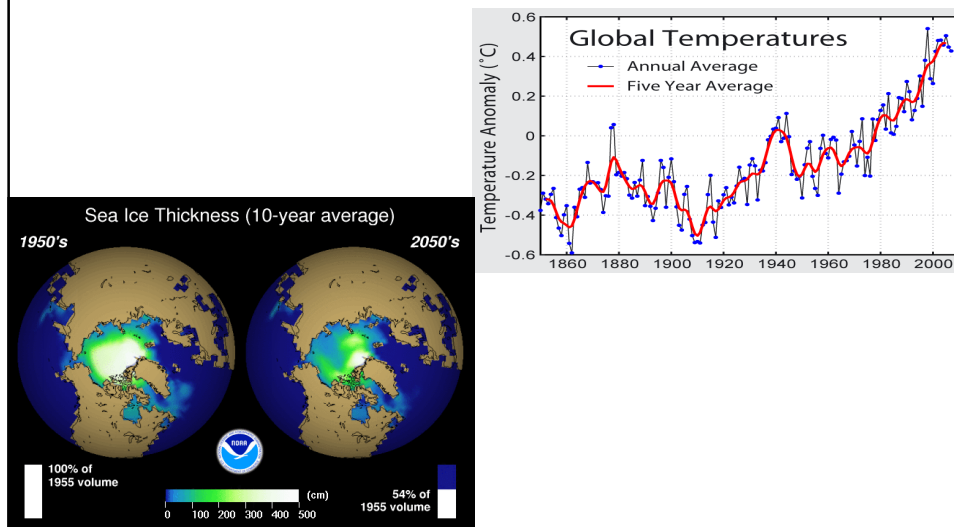
¹TINE Rådgiving

²Norwegian University of Life Sciences

NØK congress 2008, Harald Volden

Status and future prospects

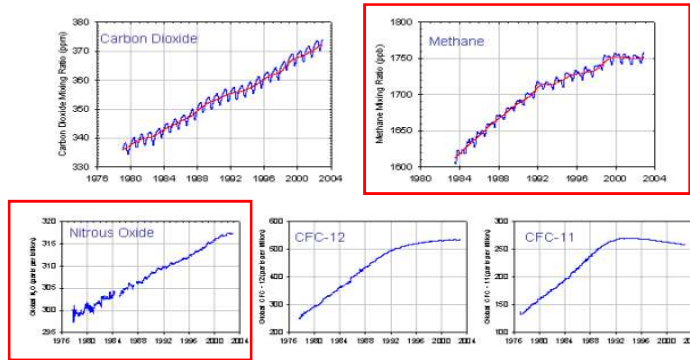
- Global temperature is rising



Status and future prospects

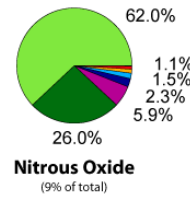
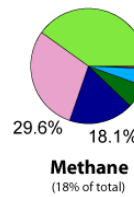
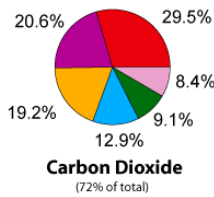
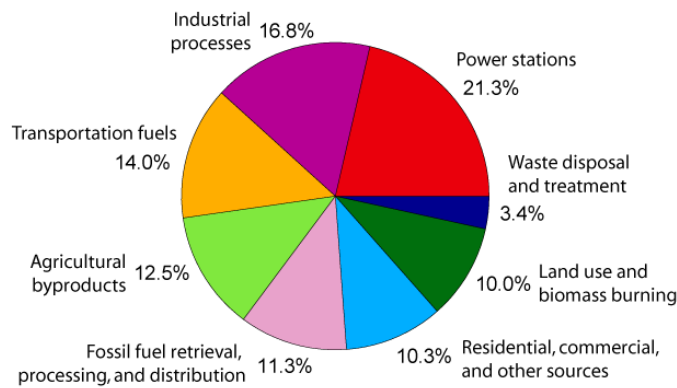
- Greenhouse gases (GHGs) in the atmosphere

Global Trends in Major Greenhouse Gases to 1/2003



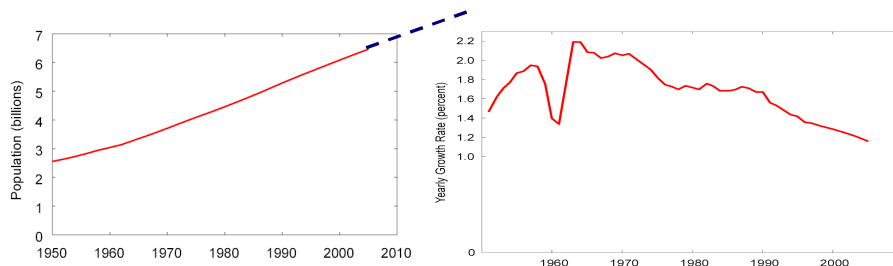
Global trends in major long-lived greenhouse gases through the year 2002. These five gases account for about 97% of the direct climate forcing by long-lived greenhouse gas increases since 1750. The remaining 3% is contributed by an assortment of 10 minor halogen gases, mainly HCFC-22, CFC-113 and CCl_4 .

Annual Greenhouse Gas Emissions by Sector



Status and future prospects

- The world's population is increasing (July 2008: 6.680 billion)



NØK congress 2008, Harald Volden

Status and future prospects

- A need for increased food production
- Geographical changes in agricultural production



NØK congress 2008, Harald Volden

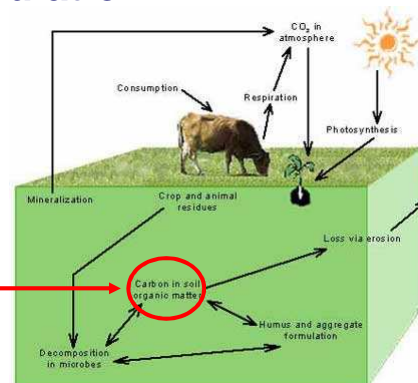
Dilemma

Ruminant production results in increased GHG emissions

We need to increase food production to meet the increasing population

Red meat/milk products vs. white meat

Grassland as a net sink for atmospheric CO₂ ?



NØK congress 2008, Harald Volden

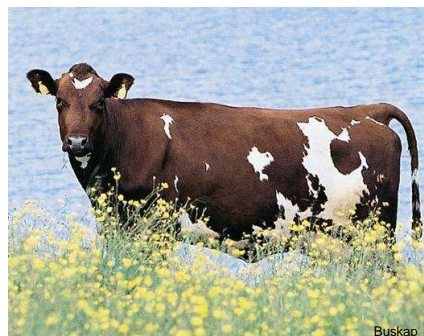
GHGs from ruminant production

•Methane (CH₄)

- From enteric fermentation in ruminants
- 2-12 % of dietary gross energy is lost as CH₄
- Two sources

87% rumen

- 95% lungs



13% hindgut

- 89% lungs
- 11% anus

99% of total methane is respired

NØK congress 2008, Harald Volden

Murrey et al., 1976

Estimated reduction potentials of targeted CH₄ abatement strategies from animal agriculture
(modified from Boadi et al, 2005; Beauchemin et al., 2008)

Strategy	Reduction potentials, %
Increased dietary concentrate level	25
Increased dietary fat level	25-30
Increased forage and pasture digestibility	20-25
Increased proportion of maize silage in grass silage based diets	15 ?
Improved animal productivity	25-30
Ionophore supplementation (e.g. monensin)	11-30
Protozoa inhibitors (in vitro)	20
Plant secondary compounds (e.g., condensed tannins and saponins (in vitro)	2-12
Animal breeding/increased feed efficiency	21

NØK congress 2008. Harald Volden

Effect of increased concentrate proportion on methane emission in dairy COWS

Milk yield and concentrate prop.	Methane, kg/yr
8500 kg, 35% concentrate	151
8500 kg, 55 % concentrate	144

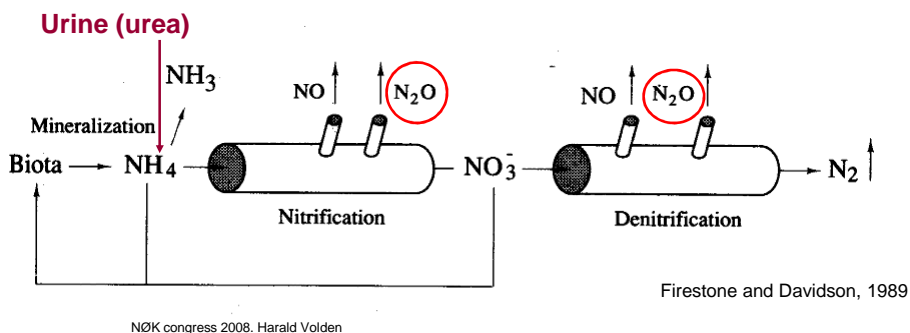
-5%

Volden og Nes, 2006

NØK congress 2008. Harald Volden

GHGs from ruminant production

- Nitrous oxide N_2O
 - From manure
 - Nitrification (aerobic)
 - Denitrification (anaerobic)



Estimated reduction potentials of targeted N_2O abatement strategies from animal agriculture (modified after de Klein and Eckard, 2008)

Strategy	Reduction potentials, %	
	N_2O	Urinary N
<i>Animal interventions</i>		
Improved dietary protein to energy ratio		10-45
Diuretic (e.g. salt)	5-10	
Condensed tannins		9-59
Nitrification inhibitor bolus	30-60	
Animal breeding		3
<i>Soil/management interventions</i>		
Fertilizer management	2-13	
Effluent management	50	
Wet season grazing management	7-11	
Soil water management	57-59	
Nitrification inhibitors	61-86	

NØK congress 2008, Harald Volden

Conclusions

- Strategies to reduce the GHG emissions need to be assessed on a whole farm basis
- Reduction strategies should always consider associated emissions, to ensure that reductions in one part of the system do not stimulate higher emissions in another part of the system
- important to identify the strategies that have the largest reduction in emission for a given production level
- Mitigation strategies should focus on N_2O rather than CH_4

NØK congress 2008, Harald Volden

